

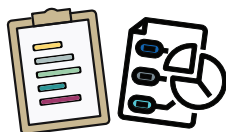


MODULE FIVE

Implementation Drivers Assessment for Agencies Implementing Triple P Interventions (IDA-TP)



Why are implementation drivers important to the Grand County Triple P Coalition?



By putting into place the structures and practices detailed in the implementation drivers, **agencies promote practitioner's delivery of Triple P as intended.**

Implementation drivers help agencies pay attention to factors that support individual and organizational practices to promote stronger implementation outcomes, such as practitioner's fidelity to the Triple P model. Fidelity is a key ingredient for achieving intended child and family outcomes.

When asked to write an email to Grand County Youth Organization about **How IDA-TP can be helpful to meet the goals of the service agency and Grand County Triple P Coalition** you wrote the following:

Ideally your pitch to your service agencies would align with the description below. The bolded items are core elements to include for a good message to the agency.

To better understand the strengths and supports your agency needs for the successful implementation of Triple P in your agency, we ask you to complete the **Implementation Drivers Assessment for Agencies Implementing Triple P (IDA-TP)**. Completing this assessment allows us to identify your organizational strengths in supporting the implementation of Triple P and structures and practices that may need to be improved over the next 6 months. The implementation structures and practices we will assess using the IDA-TP have been found to strongly **predict practitioner fidelity to Triple P session models** and the **sustainment of Triple P within your agency**. Consider this assessment one key piece of the puzzle that helps us better understand how we can together to **support your organization to reach its goals and to consistently contribute to the shared child and family outcomes** the Grand County Triple P Coalition aims to achieve. **We'll use the results from the IDA-TP to make our collaborative Triple P action plans for the next 6 months** outlining priorities and next steps for your individual agency to effectively support the use of Triple P.

Thank You,
Grand County Implementation Team



ICTP
Implementation
Capacity for Triple P



FRANK PORTER GRAHAM
CHILD DEVELOPMENT INSTITUTE



MODULE FIVE

Implementation Drivers Assessment for Agencies Implementing Triple P Interventions (IDA-TP)



Four Preparation Steps Needed Prior to Facilitating the IDA-TP



1. Provide a brief orientation to the purpose and objectives of the IDA-TP.



2. Discuss agency-level leadership and staff who would be most relevant to participate in the assessment.



3. Coordinate a date, time, and location for the assessment that works with all attendees' schedules.



4. Send a copy of the IDA-TP to agency participants at least two weeks prior to the assessment date and encourage them to review it but not discuss their scoring/ratings with each other.

The team members that should participate as respondents for the IDA-TP at Grand County Youth Organization agency:



LaTasha

is a data specialist who collates agency Triple P data to send to the Coalition Implementation Team and reports data out within Grand County Youth Organization and to external partners and stakeholders.

YOU SELECTED: You should have chosen LaTasha given her role in Triple P Quality and Outcome Monitoring Systems.



Brice

splits his time, both delivering Triple P seminars on occasion and participating as an agency implementation team member supporting the use of Triple P on a regular basis.

YOU SELECTED: You should have chosen Brice because of his role on the agency implementation team in addition to his Triple P delivery responsibilities.



De'Andre

is an enthusiastic Triple P provider trained in 3 levels of Triple P.

YOU SELECTED: As staff are not involved in supporting the implementation of Triple P or are only involved in delivering Triple P as providers, you should not have chosen De'Andre.



Allison

is an agency leader who oversees Triple P for Grand County Youth Organization, supervising several members of the agency implementation team and being responsible for most decisions related to Triple P.

YOU SELECTED: You should have chosen Allison as agency leaders with executive authority to make decisions about Triple P should participate in the IDA-TP.





MODULE FIVE

Implementation Drivers Assessment for Agencies Implementing Triple P Interventions (IDA-TP)

Scores from the IDA-TP and Action Planning

The intent behind the IDA is not for every agency to have fully in place every item assessed, current evidence suggests to aim for an Agency Implementation Drivers Summary index score of 70% or higher. Grand County Youth Organization scored 62%. Amidst strengths, there are some clear areas that could be a target for action planning. **What is the best way to follow up on the 33% this agency received on the Agency Sustainability Planning index?**

Below is your response along with a suggested response.

INDEX	# of Items (89 Total Items)	Actual Points Possible/ Points Possible	Percentage of Points Possible
AIC	16	22 / 32	69%
RS	10	14 / 20	70%
T	7*	19 / 22	86%
C	10	5 / 20	25%
FID	8	8 / 16	50%
DSDS	14	15 / 28	54%
FAC	10	15 / 20	75%
SI	14	20 / 28	71%
Agency Implementation Drivers Index (AIDI) <small>(RS, T, C, FID, DSDS, FAC, SI)</small>	73	96 / 154	62%
Agency Sustainability Planning Index <small>(AIC4, AIC16, SI14)</small>	3	2 / 6	33%

Ideally your follow-up would align with the description below. The bolded items are core elements to include for a good message to the agency.

We want to ensure that we're **setting up Triple P to be sustainable here within Grand County Youth Organization**. One key practice that we've learned to engage in early and often is sustainability planning.

Formal sustainability plans have shown to be a significant predictor of whether agencies continue delivering Triple P. Based on the results from your most recent IDA-TP, it seems like this is one area we might work on together to make Triple P more sustainable in Grand County Youth Organization.

Would you be interested in learning more about what agency sustainability planning incorporates? **Perhaps we can put together an action plan** to begin more fully developing and documenting your sustainability plans?

